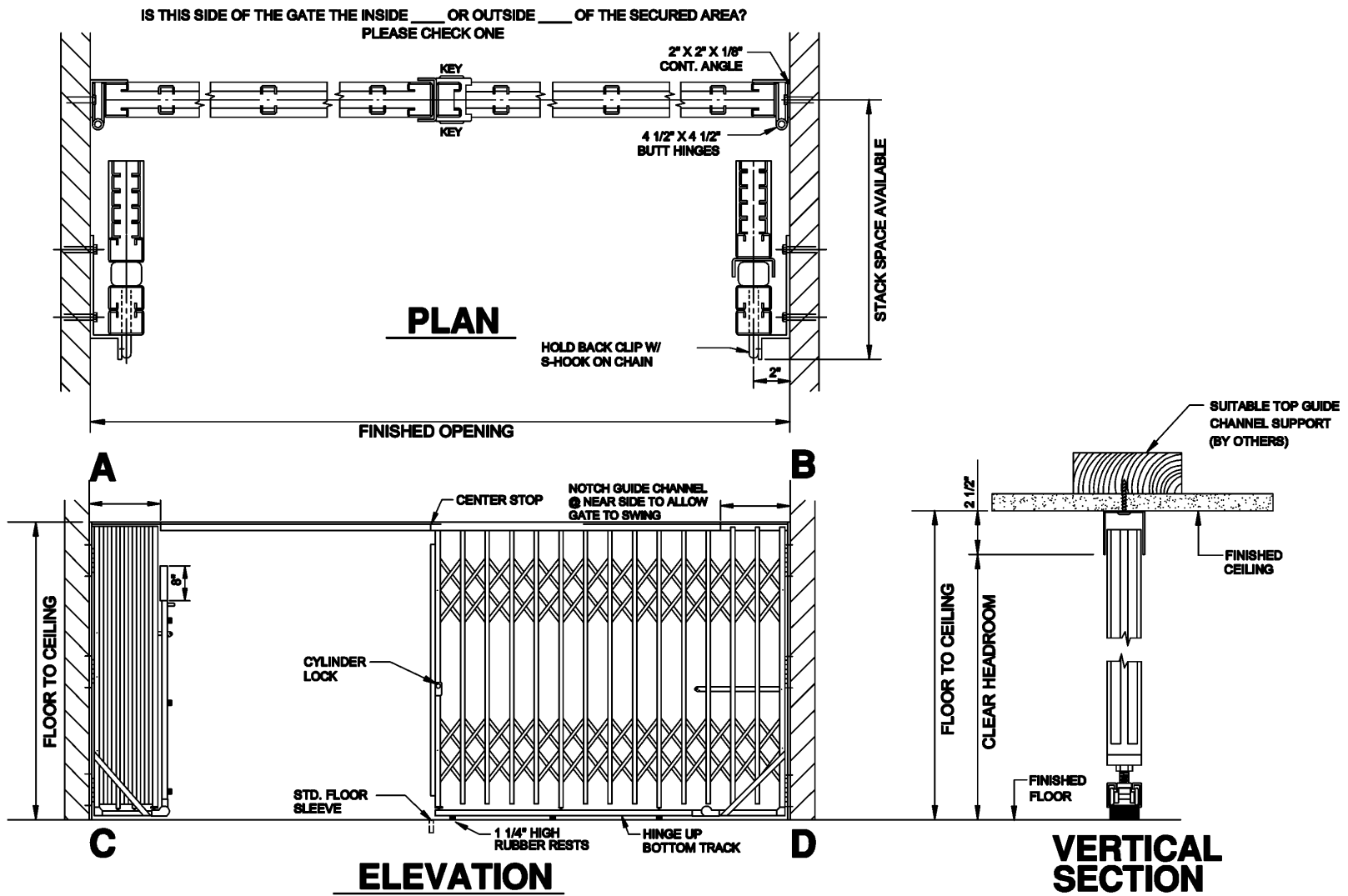


# Extra-Duty Double – Fixed Top Guide, Folding Bottom Track, Hinged

For applications less than 8'-0" in height

GED SERIES  
NO. GEDH80



Dealer:  
Contact:  
Phone:  
Fax:

Approved by:  
Sign:  
Date:

**Illinois Engineered Products**  
2035 S. Racine Ave. Chicago, IL 60608  
Phone: 312-850-3710  
Fax: 312-850-4736



# Site Survey Extra Duty Gates



1. Exact width of opening: A-B \_\_\_\_\_ and C-D \_\_\_\_\_

2. Exact height from floor to top of track: C-A \_\_\_\_\_ and D-B \_\_\_\_\_



3.  Cylinder lock or  Hasp for padlock

If cylinder lock:  Keyed inside and outside  Keyed inside and blank outside  Keyed outside and blank inside

4. Ceiling Mount:  Yes  No

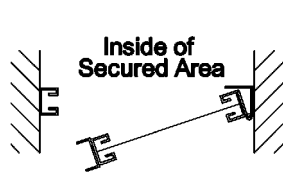
Drop Ceiling:  Yes  No

Dropped ceilings require the fixed top guide to be self supporting. Gates over 8'-0" in height must be a fixed top guide.

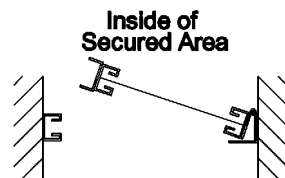
5. Single gates only:  Lock left or  Lock right

6. Stacked width space available: \_\_\_\_\_

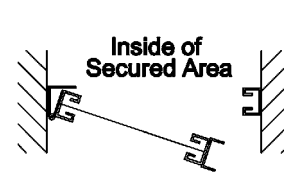
7. Do you want gate to pivot:  Yes, circle the drawing below that indicates direction of pivot.  No



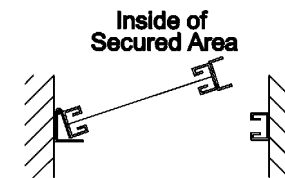
Right Hand Hinge Out



Right Hand Hinge In



Left Hand Hinge Out



Left Hand Hinge In

8. Finish:  Standard Galvanized or  Powder coated (specify color): \_\_\_\_\_

*Customized and special gates are non-refundable.*